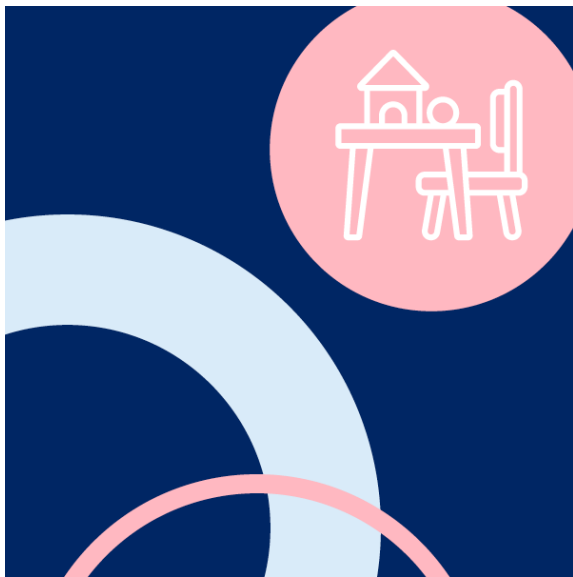


To: Providers



Education



# Consultation on 100 new public preschools

<<date>> September 2023

Dear <<name of Approved Provider>>

We are writing to let you know that a school in the area of the below services is being considered for a new public preschool:

- <<Name of service>>
- <<Name of service>>

The NSW Government has committed to building 100 new public preschools on public primary school sites over the next 4 years.

The department is prioritising the children and communities with greatest educational need. We have now begun consulting with schools based on analysis of their community and educational need, child development outcomes and projected future demand for a preschool.

We are committed to working with early childhood education and care (ECEC) services located near schools under consideration to better understand your community and ensure that the new preschools will be built where they are most needed.

Final decisions will only be made after close consideration of insights gained through consultation with local ECEC services, schools and stakeholders.

The department is dedicated to supporting a sustainable and thriving sector made up of diverse service types to meet the needs of children and families across the state.

## **Information webinar**

Directors of the above services are invited to a webinar to learn more about our plans to build 100 new public preschools. Please forward this email to the directors of these services so they can register now.


- <<date and time>>
- <<date and time>>
- <<date and time>>

We are prioritising our consultation with the sector and look forward to working with you as soon as possible. After the webinars, directors will

receive further information from us and the opportunity to share local insight through a survey and optional phone call.

## For more information

Visit our website or contact us at [100preschools@det.nsw.edu.au](mailto:100preschools@det.nsw.edu.au).



We recognise the Ongoing Custodians of the lands and waterways where we work and live. We pay respect to Elders past and present as ongoing teachers of knowledge, songlines and stories. We strive to ensure every Aboriginal and/or Torres Strait Islander learner in NSW achieves their potential through education.

